

STANDARD / EXTRA WIDE COUPLINGS

Insertion of a junction or repair of existing pipeline using Standard Extra Wide Couplings

- Cut section from pipeline using pipe cutter or disc saw and remove.
- This should be about 20mm longer than the junction or short pipe length to be installed.
- Loosen clamps on coupling and slide onto each end of existing pipeline then position new junction or short pipe length. (Lubricant not required.)
- Place pencil mark half a coupling width from each joint.
- Using these pencil marks, centre a coupling over one joint at a time.
- Tighten the worm drive units in sequence across the width of the coupling to recommended torque. Central shear ring is on the coupling, this should be tightened first.
- Upon completion of joints, carefully tamp bedding material under the pipe.



ADAPTOR / DRAIN

Installing Drain Couplings

- Slide the coupling fully onto pipe; position next pipe.
- Mark one pipe with a pencil, half a coupling width from the joint.
- Centre coupling over joint.
- Tighten clamps to recommended torque and tamp bedding material under pipe.

Installing Adaptor Couplings

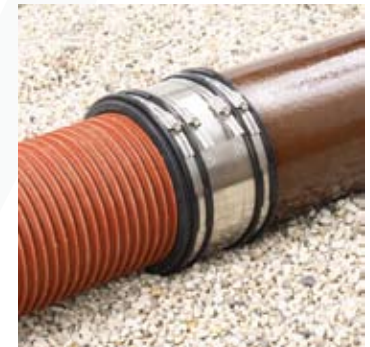
- Slide coupling fully onto larger pipe.
- Mark smaller pipe with a pencil, half a coupling width from the joint.
- Insert smaller pipe up to the mark.
- Tighten clamps to recommended torque and tamp bedding material under pipe.



BUSHES

Installing a Standard Coupling using a Bush

- Slide the bush over the end of the smaller pipe. Loosen the clips on the coupling and place on the end of the larger pipe.
- If required, additional bushes can be placed over the first to obtain the necessary thickness.
- Push pipes together and slide the coupling over the bush until the ends are level. (Lubricant not required.)
- Tighten the central shear ring then clamps to recommended torque.
- Upon completion of joints, carefully tamp bedding material under the pipe.



LATERAL CONNECTOR

- Drill 90° hole to pipe axis
- Clean and file drill hole
- Press Lateral Connector (L.C.) into socket
- Pull L.C. up until bottom flange is tight against inside wall pipe
- Mark incoming lateral pipe 80 mm from end/ lubricate pipe and L.C.
- Now press pipe down to lowest stop (mark disappears). Tighten the clamp to 6 Nm

