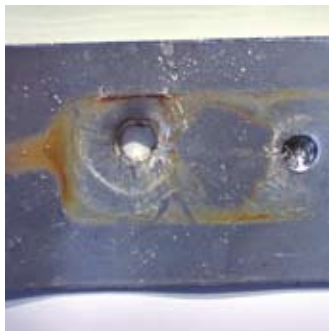


## TOXING<sup>®</sup> OF THE SHEAR-BAND

Traditional shear band fabrication entails spot welding of clamps to the shear band. Heat created during the welding process actually burns the stainless steel. The composition of the stainless steel is attacked and intercrystalline corrosion can result at the welding points.

The shear band on the new Mission, Standard Coupling incorporates the latest in stainless steel fastening techniques: TOX<sup>®</sup> Technology (no spot welds). The negative aspects associated with spot welding are eliminated in this advance process, yet the bond meets or exceeds all relevant tensile strength and shear requirements.



## PIPE TABLE

Pipe Table for nominal OD's of Pipes from DN40-DN100 (Guidance only)

Pipe Classification	Nominal Sizes (DN)							Imperial Sizes					
	40	50	65	70	75	80	82	100	2	2.5	3	3.5	4
Cast Iron BS416 (Soil)		63		89		114			63/65	73	89	99.2	114
Cast Iron BS437 (Drain)		65		92		119					92		120
Cast Iron SMU/Ensign/SML		60		80			112						
Cast (Spun) Iron BS1211 (A.B.)	55.9	69.1	82.3		95.5		121.9						
Cast (Spun) Iron BS1211 (C.D.)	55.9	69.1	82.3		95.5		121.9						
Copper		54.1		66.8	76.3			108.3		66.8	79.9		106.3
Galvanised Steel BS3868		60.2	76		88.7		113.9						
PVCu					82.8	110							
muPVC		54.3											
ABS	42.9	55.9											
Polypropylene	41/42.8	54.1											
Aluminium		63			76		102						

Pipe Table for nominal OD's of Pipes from DN100-DN600 (Guidance only)

Nominal Sizes (DN)	Imperial Sizes																							
	100	125	150	175	180	200	225	250	300	350	360	375	400	450	3	5	7	8	9	10	12	15	18	
*HepSleeve / HepSeal / Densleeve / Densseal																								
SuperSleeve / Super Seal	130-133		186-190				269-278		364-380			451	480-492	542-544	98	156	213	238	268	295	356	445	533	
Concrete	122		178				263		357															
PVCu			200				286-305		375-425			457-520		525-590										
Ultra-Rib	110		160			200		250	315				400	450										
Quantum Highway / Sewer			170		200		250		335		400													
Ridgidrain			160				250		330				465											
Polysewer / Ridgisewer	118		178				266		354			435	460	514										
ABS			160				250		330				457	511										
Ductile Iron BSEN598	114.3		168.3	200		219.1		280	315						89	140		219			273	323		
Cast Iron SMU/Ensign/SML	118		170				222	274	326	378			429											
Cast Iron BS437 (Drain)	112	137	162			212		276.5	328.5															
Cast Iron BS416 (Soil)	114		173				256																	
Cast (Spun) Iron BS1211 (A.B.)	119																							
Cast (Spun) Iron BS1211 (C.D.)	121.9	149.9	177.3	204.7		232.2	259.1	286	333.8	386.6												333.8	413	492.3
Grey Iron BS4622	121.9	149.9	177.3	204.7		232.2	259.1	286	345.4	399.3												345.4	426.2	453.1
Stainless Steel	118		170			222		274	326				429	480										
Polyethylene	110		160																					
Twinwall - PP/PE	111	126	161		181	201	226	251	317	357			402	453										
Corrugated PVCu	119	150	178			235	268		355			429	455	514										
Pitch Fibre	110		170				250																	
Asbestos Cement L	125		181	238																				
Asbestos Cement M	125		182	208		232	260	288	339			423	437	484										
Asbestos Cement H								346				429	440	490										

\* Also referred to as salt glazed ware or vitrified clay