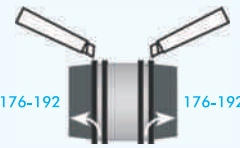




MISSION-GENIUS™ Multi-Flexible-Couplings with **integrated Bushes**



| EXAMPLE APPLICATION DN 150 | GENIUS-Option Size Range (mm) |
|---|--|
| <ul style="list-style-type: none"> Supersleve, Superseal Densleve, Densel Hepseal Twinwall, Rigidrain Pitch Fibre Asbestos C. | <ul style="list-style-type: none"> Supersleve, Superseal Densleve, Densel Hepseal Twinwall, Rigidrain Pitch Fibre Asbestos C.  <p>176-192 176-192</p> |
| <ul style="list-style-type: none"> PVCu, PP, PE Ultra-Rib, Ultra-Fortis Polysewer, Quantum Cast Iron, Grey Iron Stainless Steel ABS | <ul style="list-style-type: none"> Supersleve, Superseal Densleve, Densel Hepseal Twinwall, Rigidrain Pitch Fibre Asbestos C.  <p>158-176 176-192</p> |
| <ul style="list-style-type: none"> PVCu, PP, PE Ultra-Rib, Ultra-Fortis Polysewer, Quantum Cast Iron, Grey Iron Stainless Steel ABS | <ul style="list-style-type: none"> PVCu, PP, PE Ultra-Rib, Ultra-Fortis Polysewer, Quantum Cast Iron, Grey Iron Stainless Steel ABS  <p>158-176 158-176</p> |



6 in 1:
NEW: MISSION-GENIUS™
THE MULTI-COUPLING FOR
AT LEAST 6 APPLICATIONS

| (DN) | TOTAL-SIZE RANGE (mm) |
|------|-----------------------|
| 100 | 108 - 137 |
| 125 | 123 - 162 |
| 150 | 158 - 192 |
| 200 | 198 - 265 |

The Mission-GENIUS™ joints **all pipes within one dimension** in the size range stated above and will resist an internal water pressure of **2.5 bar**.

The right solution always to hand: What ever pipe material needs to be jointed within one dimension (DN), the Mission-GENIUS™ will always be the right flexible coupling for the contractor. The connection can be made immediately and the site work can continue without delay.

The Mission-GENIUS™ has been designed to the profile of the Mission Standard Coupling and comes with **two integrated bushes** that can be folded out and removed on one or both sides depending on the application.

For more information please contact us on www.missionrubber.co.uk or

Tel: +44 (0) 114 257 0040 • Fax: +44 (0) 114 257 1122 • Email: sales@missionrubber.co.uk

Mission Rubber (UK) Limited, Units 4+5, Atlas Business Park, Starnhill Close, Ecclesfield, Sheffield, S35 9TG

INSTALLATION GUIDE

MISSION-GENIUS™

Multi-Flexible-Couplings with **integrated Bushes**



1. Clay / Clay

Fold out and cut off both GENIUS bushes.



1. Ultra-Rib / Clay

GENIUS bush integrated on the left, fold out and cut off on the right side.



1. PP / PVCu

Both GENIUS bushes stay integrated.



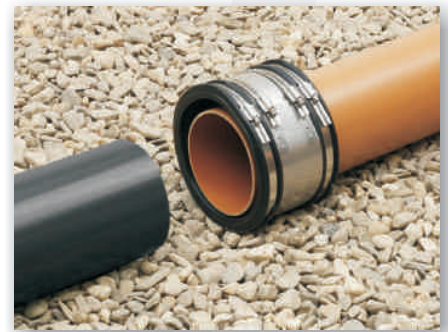
2. Clay / Clay

Slide GENIUS over pipe end and push pipes together.



2. Ultra-Rib / Clay

Slide GENIUS over clay pipe and push pipes together.



2. PP / PVCu

Slide GENIUS over pipe end and push pipes together.



EPDM-Rubber according to DIN EN 681-1 with lock-in-place sleeve profile for the retention of end clamps.

Clamps and shear bands manufactured from stainless steel grade 1.4301 according to DIN EN 10 088-2, jointed with corrosion resistant TOX®-Technology.



For more information please contact us on www.missionrubber.co.uk or

Tel: +44 (0) 114 257 0040 • Fax: +44 (0) 114 257 1122 • Email: sales@missionrubber.co.uk

Mission Rubber (UK) Limited, Units 4+5, Atlas Business Park, Starnhill Close, Ecclesfield, Sheffield, S35 9TG