

INSTALLATION GUIDE

MISSION-GENIUS™

Multi-Flexible-Couplings with **integrated Bushes**



1. Clay / Clay

Fold out and cut off both GENIUS bushes.



1. Ultra-Rib / Clay

GENIUS bush integrated on the left, fold out and cut off on the right side.



1. PP / PVCu

Both GENIUS bushes stay integrated.



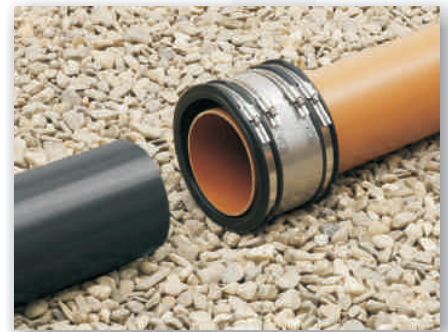
2. Clay / Clay

Slide GENIUS over pipe end and push pipes together.



2. Ultra-Rib / Clay

Slide GENIUS over clay pipe and push pipes together.



2. PP / PVCu

Slide GENIUS over pipe end and push pipes together.



EPDM-Rubber according to DIN EN 681-1 with lock-in-place sleeve profile for the retention of end clamps.

Clamps and shear bands manufactured from stainless steel grade 1.4301 according to DIN EN 10 088-2, jointed with corrosion resistant TOX®-Technology.



For more information please contact us on www.missionrubber.co.uk or

Tel: +44 (0) 114 257 0040 • Fax: +44 (0) 114 257 1122 • Email: sales@missionrubber.co.uk

Mission Rubber (UK) Limited, Units 4+5, Atlas Business Park, Starnhill Close, Ecclesfield, Sheffield, S35 9TG