



Coupling

BML-CONNECTOR

- + For bridge drainage
- + Reinforced clamps
- + AISI 316 stainless steel
- + Ozone resistant EPDM rubber

BML-Connector – for connecting bridge drainage pipes within same dimension

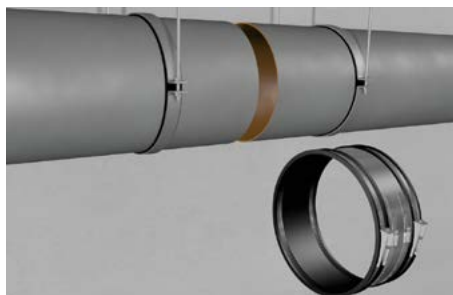
The BML-Connector is fitted with reinforced clamps. Linear expansion through temperature variation and vibrations of the bridge can be compensated.

An angular deflection of up to 3% allows installations for curved bridges, too. The ozone resistant EPDM rubber guarantees a durable tightening.

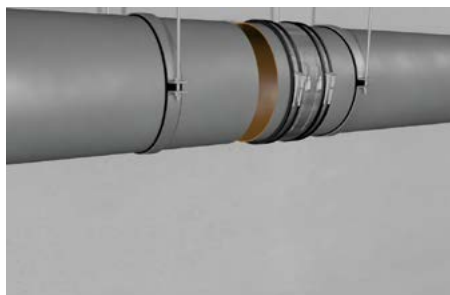
The BML-Connector can also be supplied in nitrile (NBR) rubber to offer resistance against oil and petrol. The used materials are resistant against road salt and exhaust fumes.



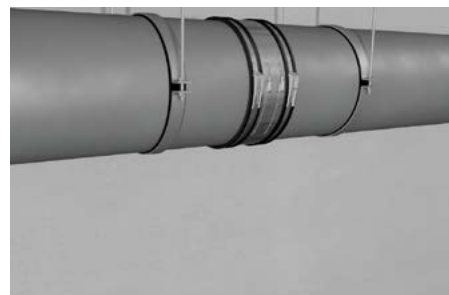
INSTALLATION



Position plain ended pipes.

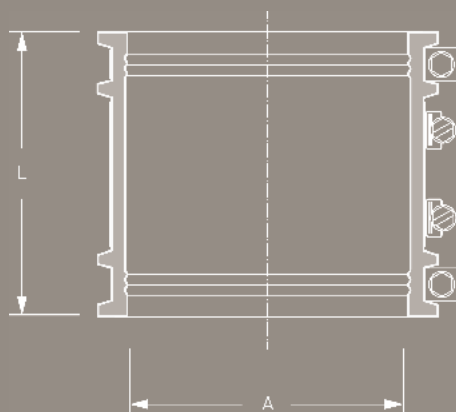


Slide coupling over one plain end.



Center coupling over joint. Tighten clamps and shear band reciprocally.

DESCRIPTION



TECHNICAL SPECIFICATION

BML-Connector for connecting bridge drainage pipes made from cast iron, GRP or stainless steel.

Pipe DN/Material _____

Article Number _____

___ Qty ___ Price/Unit ___ Total

Manufacturer: MISSION RUBBER (UK) Ltd., Sheffield, S35 9TG, T+44 (0) 114 257 - 0040

Pressure Tightness: 2.5 bar water / -0.3 bar vacuum

Jetting Resistance: 120 bar

Corrosion Resistance: TOX®-Technology

Sealing Material: EPDM or Nitrile (NBR) rubber with lock in place profile according to BS EN 681-1

Stainless Steel: AISI 304/1.4301, alternatively AISI 316/1.4404 according to BS EN 10088-2

Temperature Resistance: -40°C to +120°C, temporary max. temperature +160°C

Standard/Approval: BS EN 16397-2, CE15



PRODUCT RANGE

BML-CONNECTOR, FOR BRIDGE DRAINAGE						
Article Number	Reference	A Size Range (mm)	L Length (mm)	resistant to (bar)	Nm	Weight (kg)
81000400	BML-Connector DN 400	400-430	190	2,5	20	6,1
81000500	BML-Connector DN 500	515-545	190	2,5	20	7,4
81000600	BML-Connector DN 600	620-645	190	2,5	20	8,8

Larger sizes are available on request.