



Standard Coupling

MSC TYPE 2B

- + For all pipe materials
- + For above and below ground
- + For usage with bushes
- + Resistant to 2.5 bar

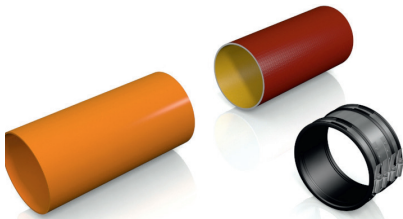
Standard Coupling Type 2B - for the connection of all pipe systems with different or same outside diameters

The Standard Coupling Type 2B connects all plain ended pipes within same or different dimensions and is compensating differences in outside diameters of max. 12 mm. Larger differences will require the use of bushes.

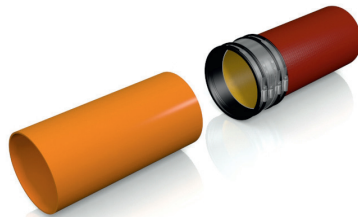
The Standard Coupling Type 2B can be used for applications above and below ground as well as inside and outside of buildings.



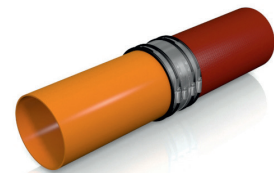
INSTALLATION



Position plain ended pipes.

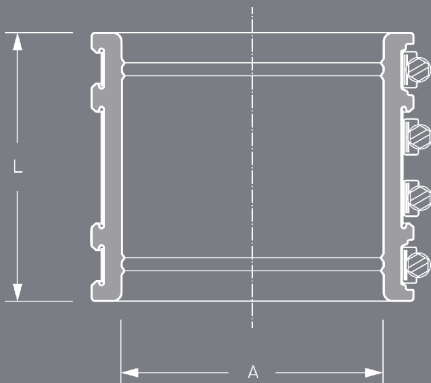


Slide coupling over one plain end.



Center coupling over joint. Tighten clamps and shear band reciprocally.

DESCRIPTION



TECHNICAL SPECIFICATION

Standard Coupling Type 2B for connection of all plain ended pipe materials with different or same outside diameters for applications above and below ground as well as inside and outside of buildings. Differences in outside diameters of more than 12 mm will require the use of bushes.

Pipe 1 DN/Material

Pipe 2 DN/Material

Article Number

Qty Price/Unit Total

Manufacturer: MISSION RUBBER (UK) LTD., Sheffield, S35 9TG
T +44 (0) 114 257 - 0040

Pressure Tightness: 2.5 bar water / -0.3 bar vacuum

Jetting Resistance: 120 bar

Corrosion Resistance: TOX®-Technology

Sealing Material: EPDM or Nitrile (NBR) rubber with lock in place profile according to BS EN 681-1

Stainless Steel: AISI 304/1.4301, alternatively AISI 316/1.4404 according to BS EN 10088-2

Temperature Resistance: -40°C to +120°C, temporary max. temperature +160°C

Standard/Approval: BS EN 295-4



PRODUCT RANGE

STANDARD COUPLING MSC, TYPE 2B						
Article Number	Reference	A Size Range (mm)	L Length (mm)	resistant to (bar)	Nm	Weight (kg)
74000050	MSC 50	42-50	90	2,5	6	0,1
74000065	MSC 65	55-65	90	2,5	6	0,3
74000075	MSC 75	65-75	90	2,5	6	0,3
74000089	MSC 89	75-89	100	2,5	6	0,4
74000100	MSC 100	85-100	100	2,5	6	0,5
79000115	MSC 115	100-115	120	2,5	6	0,8
79000120	MSC 120	105-120	120	2,5	6	0,9
73100137	MSC 137	120-137	120	2,5	6	0,9
79000150	MSC 150	125-150	120	2,5	6	1,0
73125162	MSC 162	137-162	120	2,5	6	1,1
79000175	MSC 175	150-175	120	2,5	6	1,2
79000190	MSC 190	165-190	120	2,5	6	1,6
73150200	MSC 200	175-200	150	2,5	10	1,7
79000212	MSC 212	187-212	150	2,5	10	1,8
79000225	MSC 225	200-225	150	2,5	10	1,9
73200250	MSC 250	225-250	150	2,5	10	2,0
73200275	MSC 275	250-275	150	2,5	10	2,3
79000290	MSC 290	265-290	150	2,5	10	3,4
73250310	MSC 310	285-310	190	2,5	10	3,5
79000320	MSC 320	290-320	190	2,5	13	3,7
73250335	MSC 335	310-335	190	2,5	13	3,8

For larger sizes refer to page 17.