



Drain Connector

MAS

- + For connection of SMU to plastic pipes
- + Internal seal
- + Resistant to 0.5 bar
- + Easy & quick installation

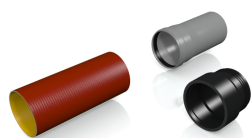
Drain connector MAS - for internal connection of SML pipes to plastic pipes

The connector is made of a high-quality EPDM sealing material, which is characterised by durability and has a noise-reducing effect in downpipes.

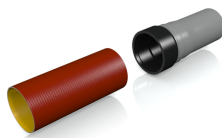
It is suitable for flush mounting as well as for use with exposed pipe connections.



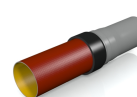
INSTALLATION



Position pipe ends.



Press the drain connector into the plastic socket as far as it will go. Lip seal in plastic socket does not need to be removed.

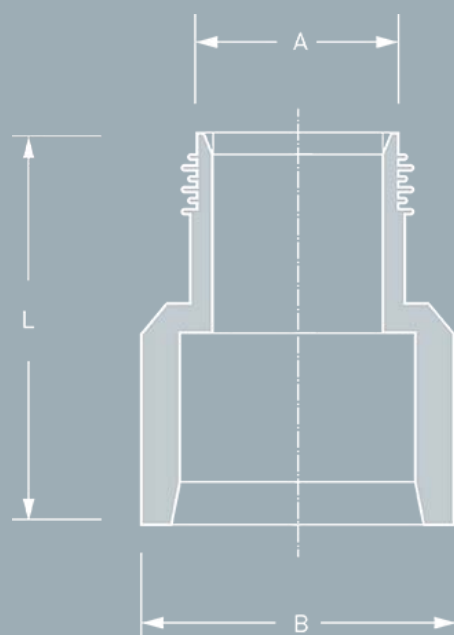


Push the SMU-pipe into the drain connector.

DESCRIPTION



TECHNICAL SPECIFICATION



Drain connector MAS - for internal connection of SML pipes to plastic pipes.

Pipe 1	DN/Material	_____
	Outside Ø (mm)	_____
Pipe 2	DN/Material	_____
	Internal Ø (mm)	_____

Article Number	_____
Qty	Price/Unit Total

Manufacturer:	MISSION RUBBER (UK) Ltd., Sheffield, S35 9TG, T +44 (0) 114 257 - 0040, F - 1122
Pressure Tightness:	0.5 bar water / -0.3 bar vacuum
Sealing Material:	EPDM rubber according to BS EN 681-1
Temperature Resistance:	-40 C° to +120° C, temporary max. temperature +160° C
UV-/Ozone Resistance:	Resistant to UV radiation and ozone
Standard/Approval:	BS EN 681-1



PRODUCT RANGE

DRAIN CONNECTOR MAS					
ArticleNumber	Reference	A Size Range (mm)	B Size Range (mm)	L Length (mm)	Weight (kg)
500127	Drain Connector MAS, DN 50	50+0,3/-0	58+2/-1	92	0,15
500128	Drain Connector MAS, DN 70	75+0,4/-0	78+2/-1	103	0,25
500129	Drain Connector MAS, DN 100	110+0,4/-0	110+2/-1	116	0,4